



Page Index

- Summary	P.1
- Sketches	P.2 - P.3
- Materials	P.4 - P.8
- Sizes	P.9 - P.15
- Fit Session	P.16 - P.16
- Costing Sheet	P.17 - P.17

Members

- Owner	pdfexample s
---------	--------------

Style Info

A short dress with a wrap dress. It has a ruffle at the bottom of the skirt.

- Units: Inches
- Sizes: S, M, L
- Sample Size: M



Sketches

Call outs



Front - Stitch Details



- 1 Short Sleeves
- 2 Wrap Dress V - Neckline
- 3 Ruffles
- 4 Circle Neckline
- 5 Waistband
- 6 Side slit Opening for the waistband

- 1 Fused Waistband - Main Fabric folded over - no edge stitch
- 2 Ruffle hemline - 1/8" Turned in single needle edge stitch



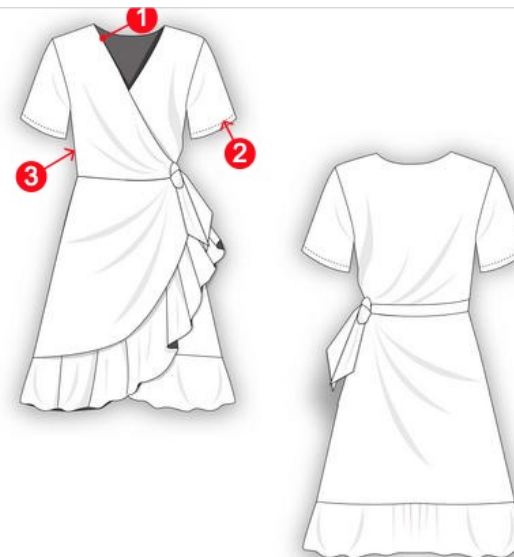
Sketches

Back - Stitch Details



- 1 Fused Back Neckline - 2" Main Fabric facing
- 2 Side Slit - 1/8" turned in Single needle stitch

Stitch Details



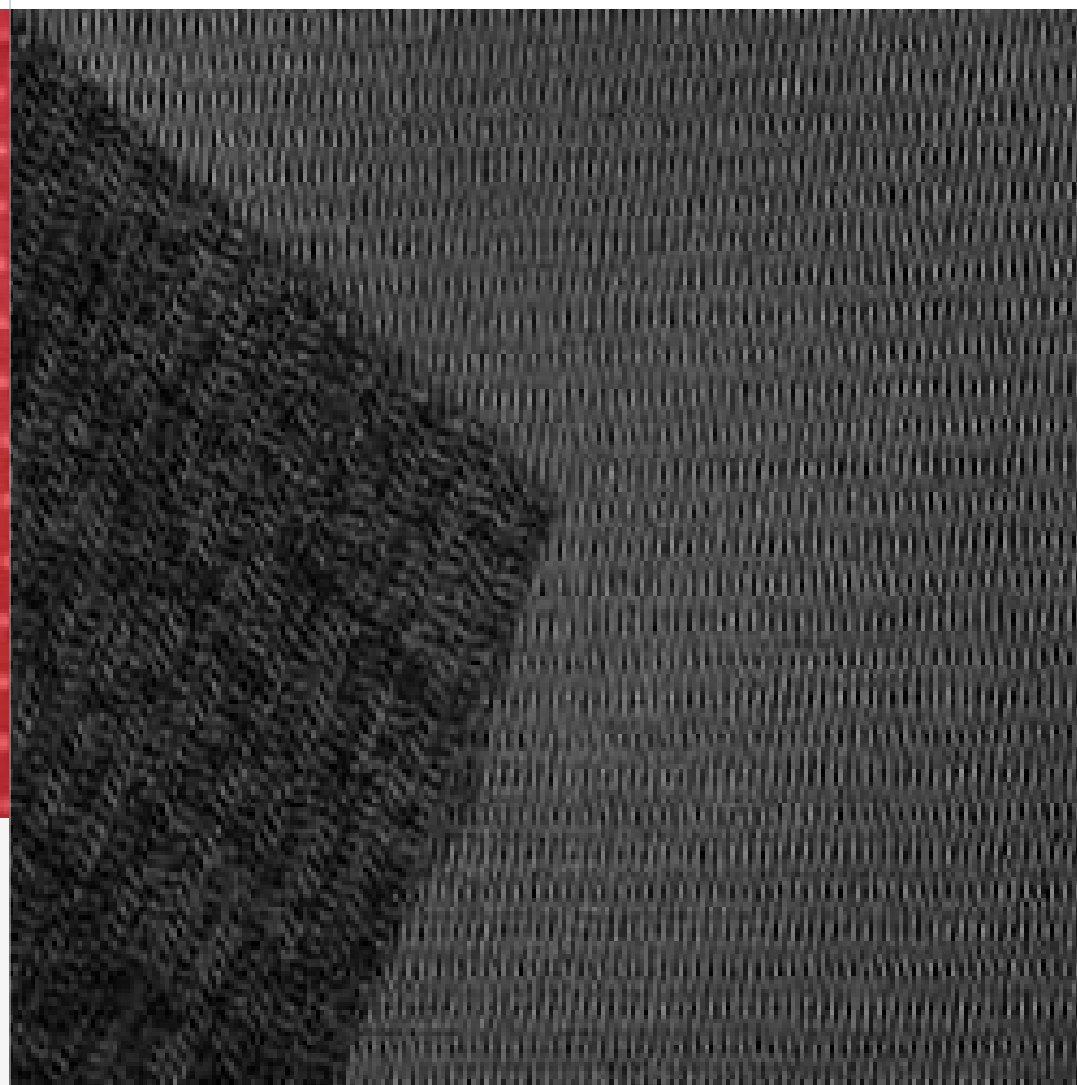
- 1 Fused Main Fabric 2" facing along the neckline
- 2 Short sleeve - 1/2" Turned in 1/8" Double needle Stitch
- 3 Side Seam - 5 thread Over Lock Stitch



Materials

Main Fabric

Fabric Fusing





Materials

Sewing Thread



Hang Tag





Materials

Poly Bag



- 1 Plastic Bag
- Packaging Plastic Bag
- Non-woven Bag
- CPP Plastic
- transparent film
- 30cm X 40cm

Main Label



- 1 Main Label
- Screen Printing Brand Logo
- Woven Label
- 100% Polyester Yarn
- Damask Weave
- 2.5" Length X 1" Width
- Placement - Garment Wrong Side below back Neckline



Materials

Wash Care Tag



- 1 Wash Care Label
- Woven Wash Care Label
- 1.5" Width X 4" Length
- 100% Polyester
- Single sided satin Weave
- Overlock Stitch to main garment



(*) Sample size is highlighted in darker green

Materials

Description	DESCRIPTION	QUANTITY/ SIZE	PLACEMENT/POSITION	COLOR REFERENCE
	Main Fabric 70%Modal 30% Cupro, Jersey Knit fabric - Polka Dot Print	1 1/2 meters	All over main garment and waistband	Red - 19-1763 TCX, Grey - 14-4107 TCX
	Fabric Fusing knitted interlining fabric, Woven, 45 gsm, 100% Polyester	1/2" meter	Along the Neckline facing and waistband	DTM, use Standard Black if unavailable
	Sewing Thread Good Quality Coats Sewing Thread	As per Requirement	All Seams	DTM
	Hang Tag Eco friendly sustainable hand tag - with a natural twine to attach	5" x 4"	Attached with twine to the main label	Natural Paper
	Poly Bag Bio-degradable Packaging Plastic Bag Non-woven Bag	1	Do not poly bag each piece individually.	Transparent
	Main Label Screen Printed Brand Logo Woven Label	1 - 2.5" Length X 1" Width	Back tack stitch on the garment collar facing.	White
	Wash Care Tag Single sided satin Weave Swift Tack through side seam	1 - 1.5" Width X 4" Length	Wearer's left side seam at 10" from the hemline	White



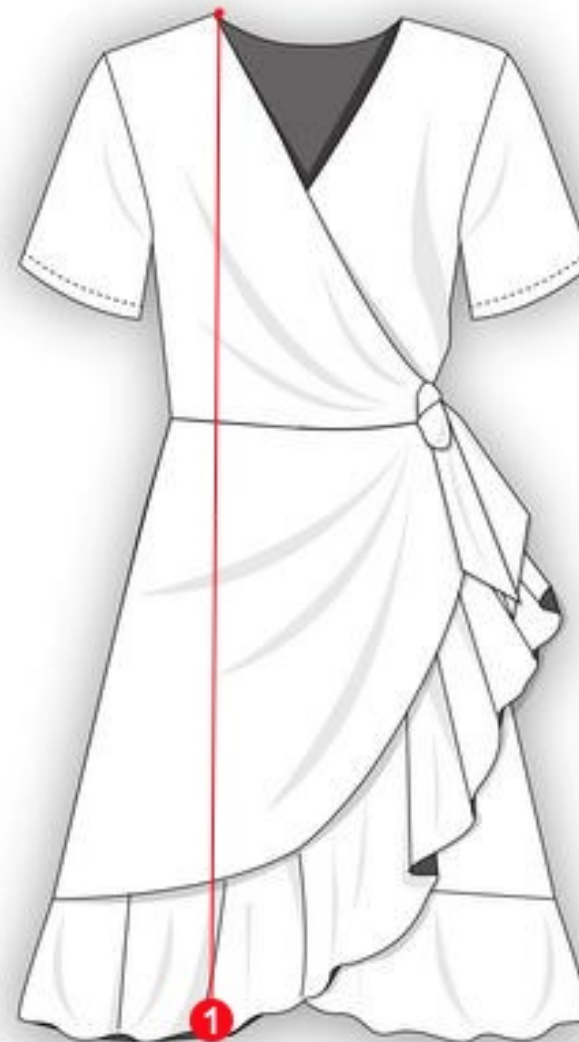
Measurements

Chest

Length of the Garment

1 Chest

1 Length of the Garment

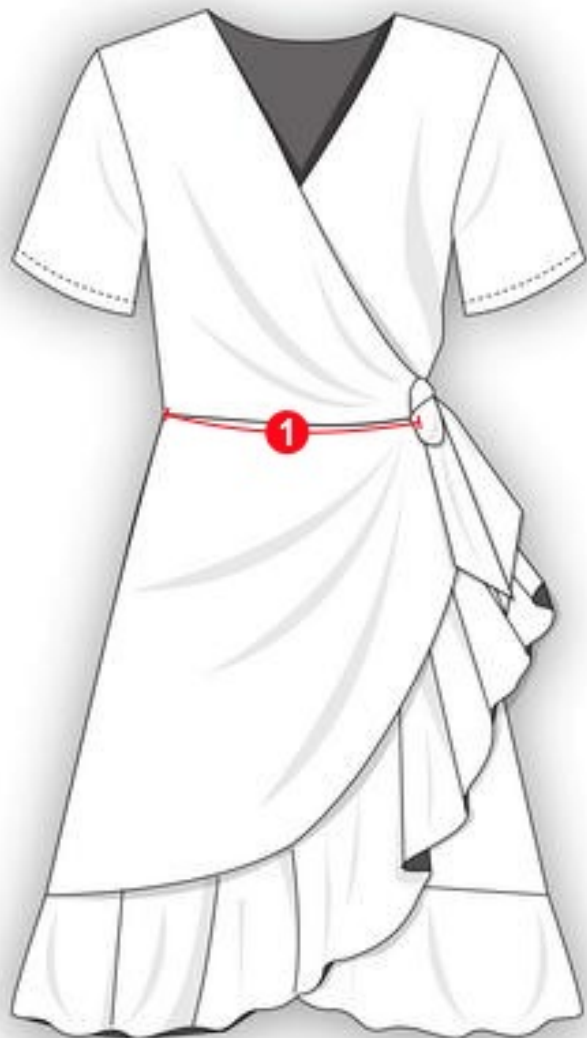




Measurements

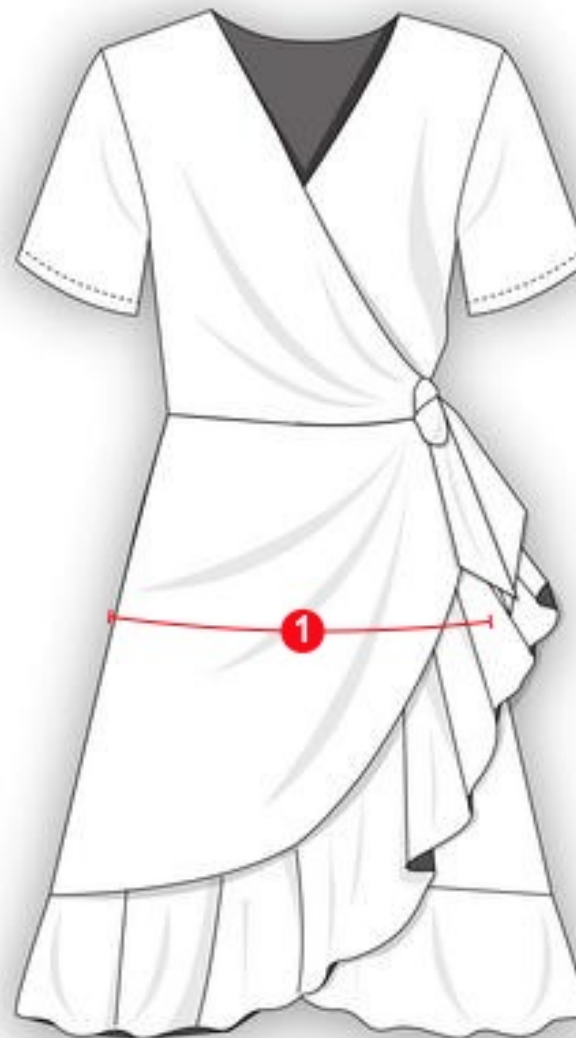
Waist

1 Waist



Hip

1 Hip





Measurements

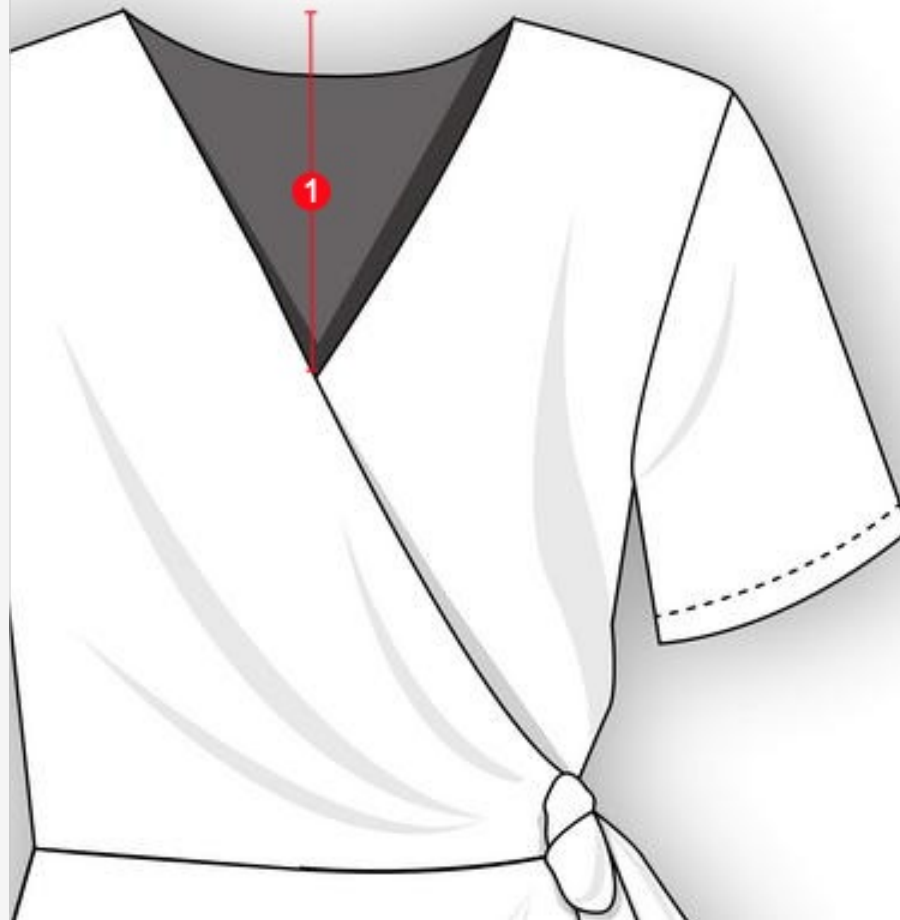
Armhole

1 Armhole



Neck Depth

1 Neck Depth

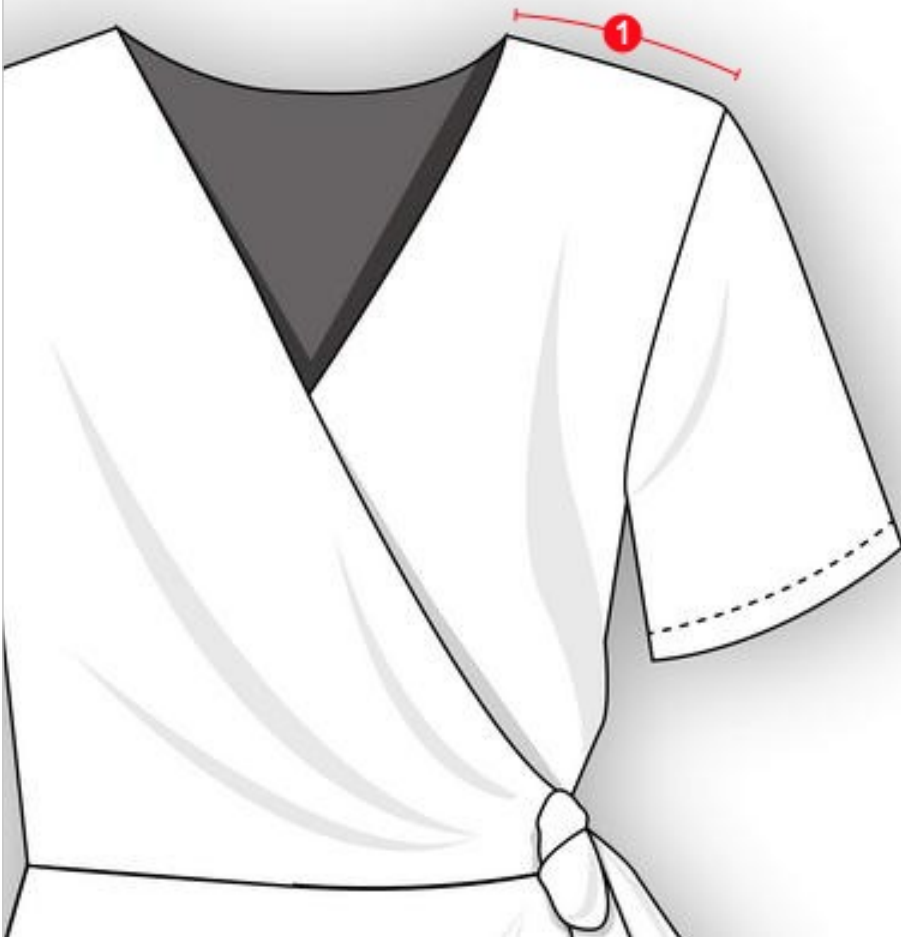




Measurements

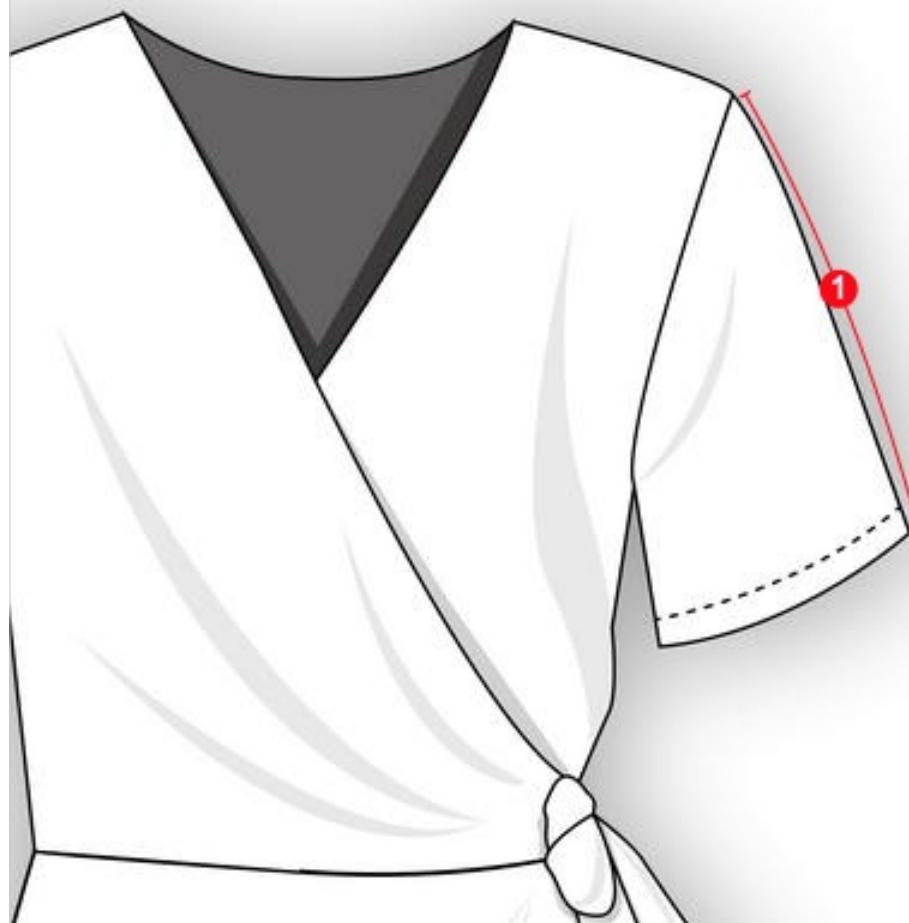
Shoulder Width

1 Shoulder Width



Sleeve Length

1 Sleeve Length





Measurements

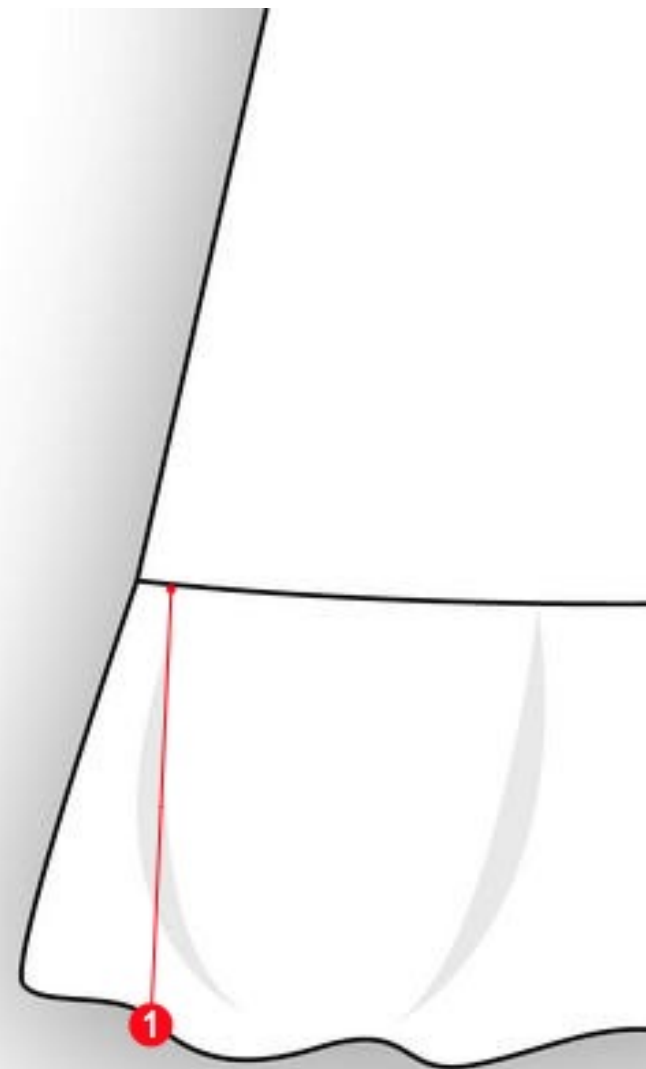
Sleeve Curve

1 Sleeve Curve



Ruffle Width

1 Ruffle Width

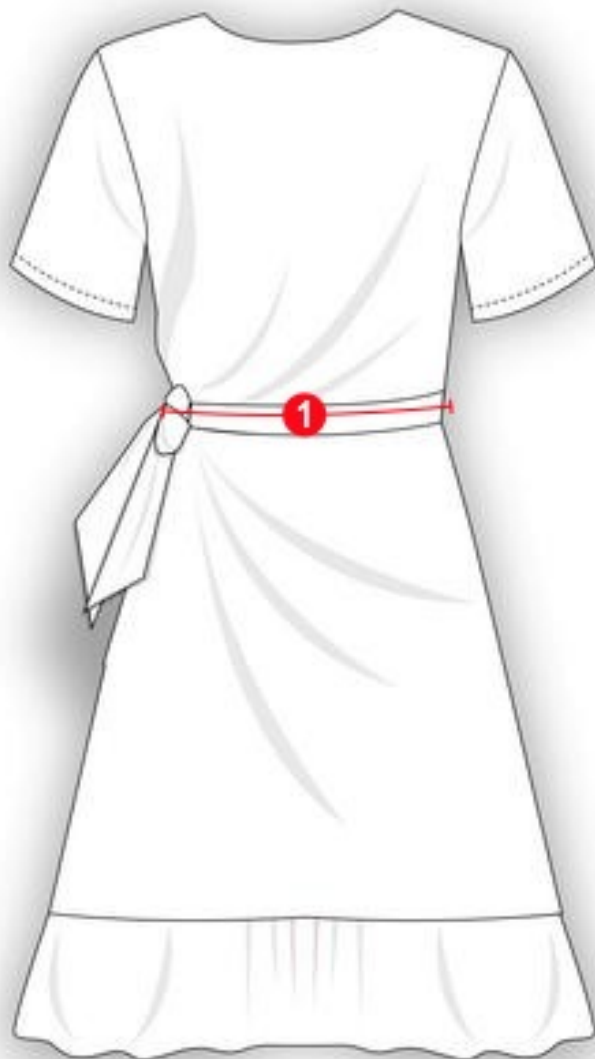




Measurements

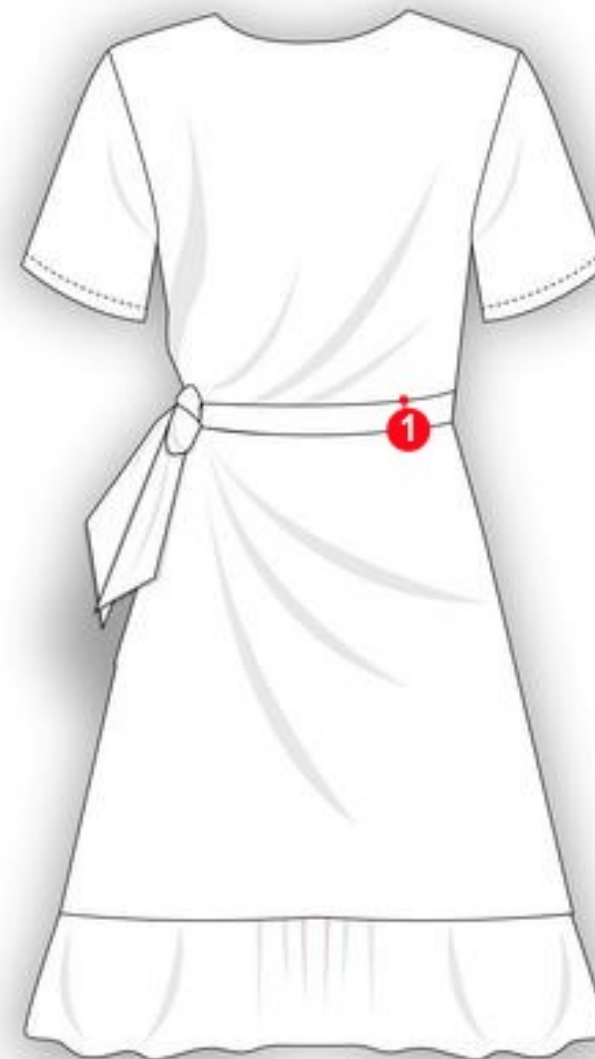
Waistband Length

1 Waistband Length



Waistband Width

1 Waistband Width





Measurements

(*) Sample size is highlighted in darker green

All measurements are in inches

Description	TOL(+)	TOL(-)	S	*M	L
Chest	+0.25	-0.25	35	37	39
Length of the Garment	+0.25	-0.25	42	43	44
Waist	+0.25	-0.25	28	30	32
Hip	+0.25	-0.25	44	46	48
Armhole	+0.125	-0.125	9 1/4	9 3/4	10 1/4
Neck Depth	+0.125	-0.125	7	7	7
Shoulder Width	+0.125	-0.125	3	3 1/2	4
Sleeve Length	+0.25	-0.25	5	5 1/2	6
Sleeve Curve	+0.125	-0.125	9 1/4	9 3/4	10 1/4
Ruffle Width	+0.125	-0.125	5	5	5
Waistband Length	+0.125	-0.125	34	36	38
Waistband Width	+0.125	-0.125	2	2	2



Fit Session

	Measurement	TOL(+)	TOL(-)	M	FIT	DIFF
Fit Session	Chest	+0.25	-0.25	37	39	2
	Length of the Garment	+0.25	-0.25	43	43	0
	Waist	+0.25	-0.25	30	30	0
	Hip	+0.25	-0.25	46	50	4
	Armhole	+0.125	-0.125	9 3/4	9 3/4	0
	Neck Depth	+0.125	-0.125	7	7	0
	Shoulder Width	+0.125	-0.125	3 1/2	3 1/2	0
	Sleeve Length	+0.25	-0.25	5 1/2	4	-1.5
	Sleeve Curve	+0.125	-0.125	9 3/4	9	-0.75
	Ruffle Width	+0.125	-0.125	5	5	0
	Waistband Length	+0.125	-0.125	36	40	4
	Waistband Width	+0.125	-0.125	2	2	0



Costing Sheet

	Description	Supplier Name	Status	Consumption	Cost per unit	Total
Costing Sheet	Main Fabric	MrGreensEcoFriendly	DISPATCHED	30	6.50	195
	Fabric Fusing	Mood Fabrics	IN STOCK	5	0.50	2.5
	Sewing Thread	Mood Fabrics	DISPATCHED	10	0.10	1
	Hand Tag	labelpartners	IN STOCK	WHOLESALE	0.10	-
	Poly Bag	labelpartners	IN STOCK	WHOLESALE	0.10	-
	Main Label	labelpartners	TO ORDER	WHOLESALE	0.25	-
	Wash Care Tag	SINICLINE ENTERPRISE	IN STOCK	WHOLESALE	0.15	-
	Total cost					198.5